



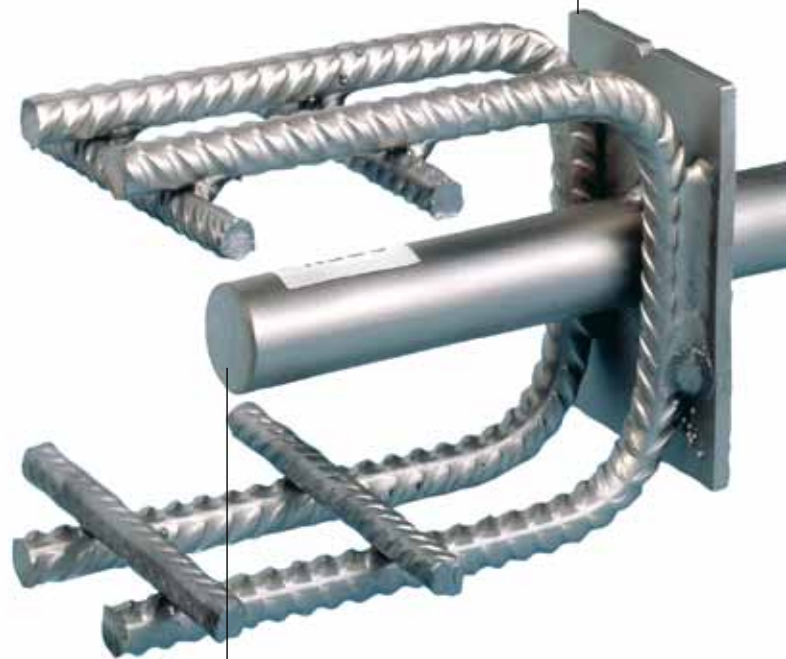
Let Schöck take the strain.
Shear load connectors
Schöck Dowel Type SLD.



Schöck Dowel. Instead of complicated joint details.



Front plate
avoids the concrete cone failure at the edge of the joint.



Dowel
for transferring high shear forces across the joints.

A convincing method

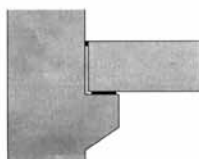
Conventional joints



Keyed joint



Double columns



Corbel support

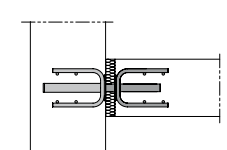
Solutions with Schöck dowels



Wall to wall

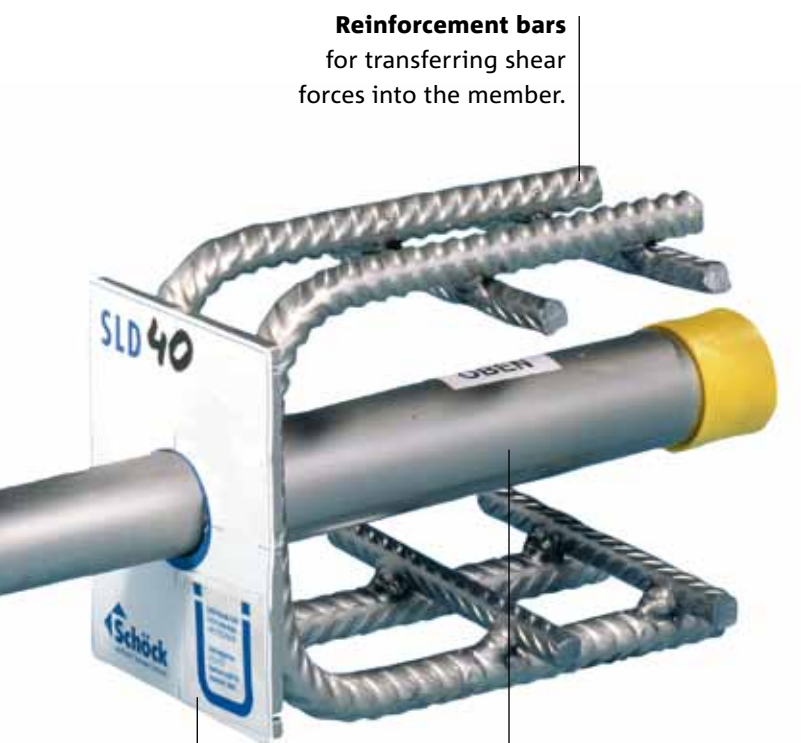


Slab to columns



Slab to wall

The design of conventional expansion joints is time consuming, prevents architectural continuity and requires a high level of accuracy in execution. The Schöck Dowel SLD facilitates planning and installation on site, is cost effective and ensures execution at the highest level of reliability. It overcomes the need for additional construction and maximises usable floor area within the structure.



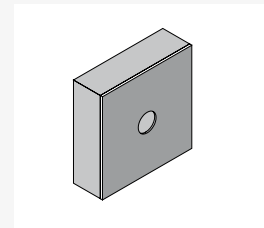
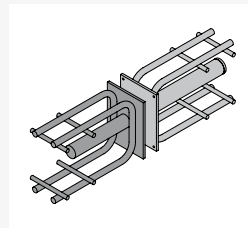
Reinforcement bars
for transferring shear forces into the member.

Sleeve
available for vertical and longitudinal movements.

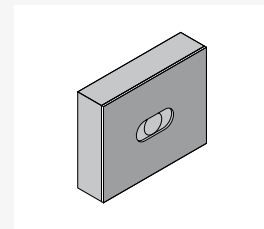
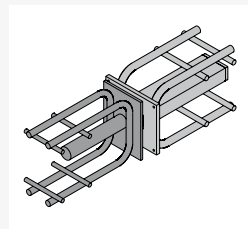
Nail plate
for the easy installation of the sleeve.

All components are made of stainless steel for maximum durability.

All types at a glance



Schöck Dowel SLD and fire protection collar for transferring high shear forces



Schöck Dowel SLD Q and fire protection collar with additional longitudinal movement



Schöck ESD and fire protection collar for structural connections

Schöck Dowel.

Design table example.

Design resistance $V_{Rd} = \min$ [steel load-bearing capacity $V_{Rd,s}$, slab load-bearing capacity $V_{Rd,c}$, punching load capacity $V_{Rd,ct}$]; according to BS EN 1992-1-1:2004

Schöck Dowel Type		SLD 40	SLD 50	SLD 60	SLD 70	SLD 80	SLD 120	SLD 150
Component thickness [mm]	Joint width [mm]	Design resistance V_{Rd} for concrete strength class C30/C37 [kN/dowel]						
160	20	44,6	55,6					
	30	44,6	55,6					
	40	37,6	50,1					
	50	30,1	40,1					
	60	25,1	33,4					
180	20	48,9	63,1	73,6				
	30	48,9	63,1	73,6				
	40	37,6	50,1	65,0				
	50	30,1	40,1	52,0				
	60	25,1	33,4	43,4				
200	20	53,1	68,3	84,3	83,7			
	30	50,2	66,4	84,3	83,7			
	40	37,6	50,1	65,0	83,7			
	50	30,1	40,1	52,0	74,1			
	60	25,1	33,4	43,4	61,7			
250	20	63,3	80,8	102,7	108,9	144,1		
	30	50,2	66,4	84,8	108,9	144,1		
	40	37,6	50,1	65,0	92,6	125,9		
	50	30,1	40,1	52,0	74,1	101,6		
	60	25,1	33,4	43,4	61,7	84,7		
300	20	67,6	85,6	105,7	137,1	170,7	192,3	
	30	50,2	66,4	84,8	116,1	152,0	192,3	
	40	37,6	50,1	65,0	92,6	125,9	192,3	
	50	30,1	40,1	52,0	74,1	101,6	189,4	
	60	25,1	33,4	43,4	61,7	84,7	158,9	
350	20	67,6	85,6	105,7	139,6	178,2	230,8	266,3
	30	50,2	66,4	84,8	116,1	152,0	230,8	266,3
	40	37,6	50,1	65,0	92,6	125,9	221,6	266,3
	50	30,1	40,1	52,0	74,1	101,6	189,4	266,3
	60	25,1	33,4	43,4	61,7	84,7	158,9	232,2

*Loads are only valid with reinforcement according to the Technical Information Schöck Dowel. For further information please contact us.

Schöck Ltd
 The Clock Tower
 2 - 4 High Street
 Kidlington
 Oxford
 OX5 2DH
 Telephone: 0845 241 3390
 Fax: 0845 241 3391
 design@schoeck.co.uk
 www.schoeck.co.uk

